



DOWNFLOW VENTILATED WORKSTATIONS & VENTILATED WET SPECIMEN STORAGE.

PRODUCT SHEET NO. 215

VERSION 3.1

FOR SAFE HANDLING OF AIRBORNE CONTAMINANTS

The **EIRDATA** downflow ventilated workstation is an effective form of local exhaust ventilation (LEV).

LEV is an engineering control system to reduce exposures to airborne contaminants such as dust, mist, fume, vapour or gas in a workplace.

There are three basic classifications of LEV; Enclosing, Receiving and Capturing devices.

A downflow ventilated workstation is defined as a simple 'capturing' LEV and a ventilated wet specimen store is defined as a simple 'enclosing' LEV as detailed within HSG258, the UK's Health and Safety Executive guidelines to Controlling airborne contaminants at work.



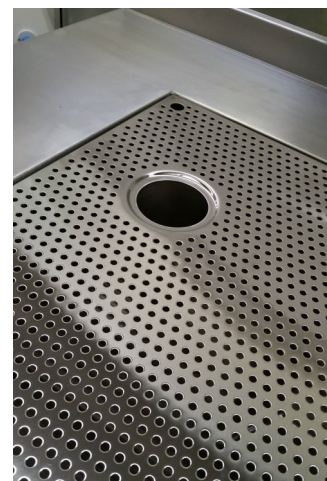
Seamless, 316 st.st for superior cleaning

SOME PROPERTIES OF AIRBORNE CONTAMINANTS

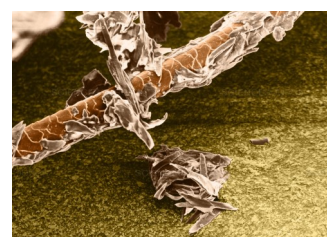
Name	Description and size	Visibility	Examples
Dust	Solid particles - can be supplied, eg powder handling, or process generated, eg crushing and grinding. Inhalable particle size 0.01 to 100µm. Respirable particle size below 10µm.	In diffuse light; ● Inhalable dust clouds are partially visible. ● Respirable dust clouds are practically invisible at concentrations up to tens of mg/m3.	Grain dust, wood dust, silica floor.
Fume	Vapourised solid that has condensed. Particle size 0.001µm to 1µm.	Fume clouds tend to be dense. They are partially visible. Fume and smoke are generally more visible than equivalent concentrations of dust.	Rubber fume, solid fume, welding fume.
Mist	Liquid particles - process generated, eg by spraying. Particle size ranges 0.01 to 100µm. but the size distribution may change as volatile liquids evaporate.	As for dust.	Electroplating, paint sprays, steam.
Fibres	Solid particles - the length is several times the diameter. Particle size - as for dust.	As for dust.	Asbestos, glass fibre.
Vapour	The gaseous phase of a liquid or solid at room temperature. Behaves as a gas.	Usually invisible. At very high concentrations, a vapour-laden cloud may just be visible.	Styrene, petrol, acetone, mercury, iodine.
Gas	A gas at room temperature.	Usually invisible - some coloured at high concentrations.	Chlorine, carbon monoxide.



Recirculating Air, in-built Fan Filter Units



Integral vented cup sink drain options

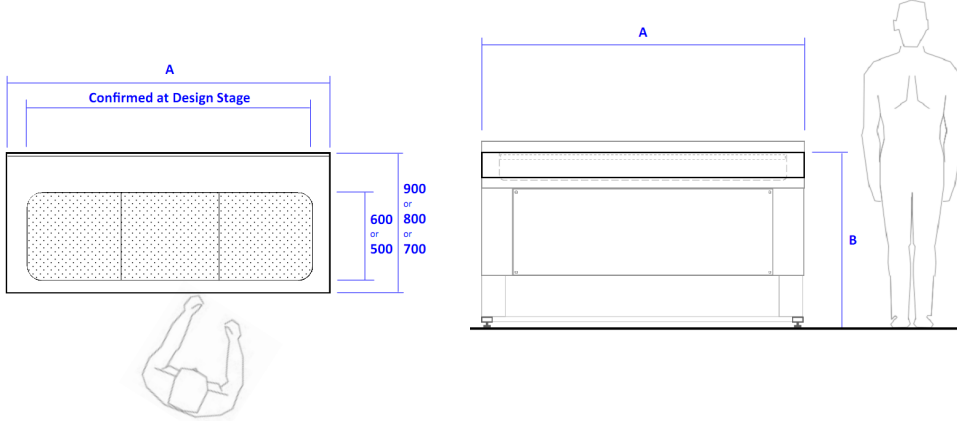


Animal Dander, SEM

STANDARD MODEL DESIGNATIONS AND DIMENSIONS

FULLY PERFORATED WORKING SURFACE

DFT18-F illustrated below with no services.



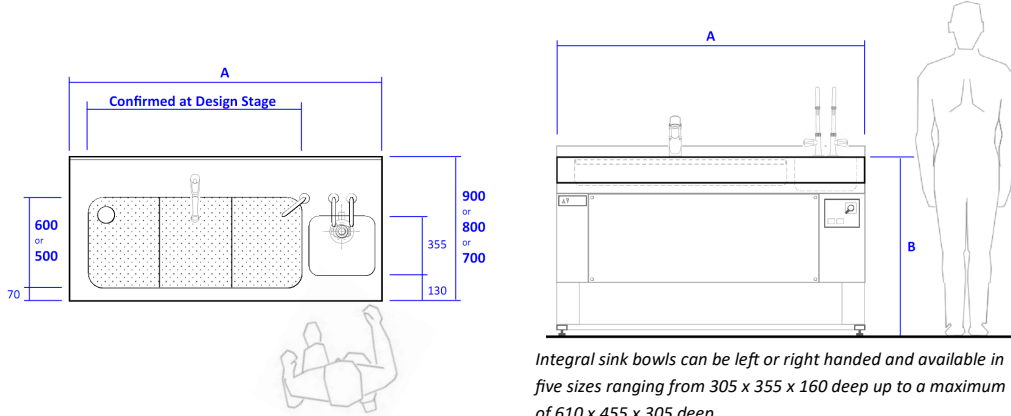
Model	Model Description	A mm	B mm
DFT10-F	Seamless, one-piece 316 st.st work surface with integral rear upstand. Flush fitting perforated sump covers. Fixed height support assembly 304 st.st. All satin polished finish. Removable front access panel for services and duct connections.	1000	900
DFT10-V	All as described above, except with in-built concealed electrical height adjustment.		760 to 1100
DFT12-F	Seamless, one-piece 316 st.st work surface with integral rear upstand. Flush fitting perforated sump covers. Fixed height support assembly 304 st.st. All satin polished finish. Removable front access panel for services and duct connections.	1200	900
DFT12-V	All as described above, except with in-built concealed electrical height adjustment.		760 to 1100
DFT15-F	Seamless, one-piece 316 st.st work surface with integral rear upstand. Flush fitting perforated sump covers. Fixed height support assembly 304 st.st. All satin polished finish. Removable front access panel for services and duct connections.	1500	900
DFT15-V	All as described above, except with in-built concealed electrical height adjustment.		760 to 1100
DFT18-F	Seamless, one-piece 316 st.st work surface with integral rear upstand. Flush fitting perforated sump covers. Fixed height support assembly 304 st.st. All satin polished finish. Removable front access panel for services and duct connections.	1800	900
DFT18-V	All as described above, except with in-built concealed electrical height adjustment.		760 to 1100
DFT20-F	Seamless, one-piece 316 st.st work surface with integral rear upstand. Flush fitting perforated sump covers. Fixed height support assembly 304 st.st. All satin polished finish. Removable front access panel for services and duct connections.	2000	900
DFT20-V	All as described above, except with in-built concealed electrical height adjustment.		760 to 1100
DFT25-F	Seamless, one-piece 316 st.st work surface with integral rear upstand. Flush fitting perforated sump covers. Fixed height support assembly 304 st.st. All satin polished finish. 2No. Removable front access panels for services and duct connections.	2500	900
DFT25-V	All as described above, except with in-built concealed electrical height adjustment.		760 to 1100
DFT30-F	Seamless, one-piece 316 st.st work surface with integral rear upstand. Flush fitting perforated sump covers. Fixed height support assembly 304 st.st. All satin polished finish. 2No. Removable front access panels for services and duct connections.	3000	900
DFT30-V	All as described above, except with in-built concealed electrical height adjustment.		760 to 1100



STANDARD MODEL DESIGNATIONS AND DIMENSIONS

PERFORATED WORKING SURFACE WITH SINK

DFT18-S-V illustrated below with vented cup-sink drain point, flexible trigger shower and sink bowl pathological macerator.



Integral sink bowls can be left or right handed and available in five sizes ranging from 305 x 355 x 160 deep up to a maximum of 610 x 455 x 305 deep.



One piece or multi-piece sump covers

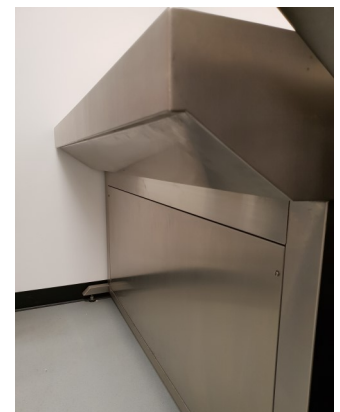


Advanced Anaesthesia Systems

Model	Model Description	A mm	B mm
DFT12-S-F	Seamless, one-piece 316 st.st work surface with integral rear upstand and sink bowl. Flush fitting perforated sump covers. Fixed height support assembly 304 st.st. All satin polished finish. Removable front access panel for services and duct connections.	1200	900
DFT12-S-V	All as described above, except with in-built concealed electrical height adjustment.		760 to 1100
DFT15-S-F	Seamless, one-piece 316 st.st work surface with integral rear upstand and sink bowl. Flush fitting perforated sump covers. Fixed height support assembly 304 st.st. All satin polished finish. Removable front access panel for services and duct connections.	1500	900
DFT15-S-V	All as described above, except with in-built concealed electrical height adjustment.		760 to 1100
DFT18-S-F	Seamless, one-piece 316 st.st work surface with integral rear upstand and sink bowl. Flush fitting perforated sump covers. Fixed height support assembly 304 st.st. All satin polished finish. Removable front access panel for services and duct connections.	1800	900
DFT18-S-V	All as described above, except with in-built concealed electrical height adjustment.		760 to 1100
DFT20-S-F	Seamless, one-piece 316 st.st work surface with integral rear upstand and sink bowl. Flush fitting perforated sump covers. Fixed height support assembly 304 st.st. All satin polished finish. Removable front access panel for services and duct connections.	2000	900
DFT20-S-V	All as described above, except with in-built concealed electrical height adjustment.		760 to 1100
DFT25-S-F	Seamless, one-piece 316 st.st work surface with integral rear upstand and sink bowl. Flush fitting perforated sump covers. Fixed height support assembly 304 st.st. All satin polished finish. 2No. Removable front access panels for services and duct connections.	2500	900
DFT25-S-V	All as described above, except with in-built concealed electrical height adjustment.		760 to 1100
DFT30-S-F	Seamless, one-piece 316 st.st work surface with integral rear upstand and sink bowl. Flush fitting perforated sump covers. Fixed height support assembly 304 st.st. All satin polished finish. 2No. Removable front access panels for services and duct connections.	3000	900
DFT30-S-V	All as described above, except with in-built concealed electrical height adjustment.		760 to 1100



Cup sink (perforated cover removed)

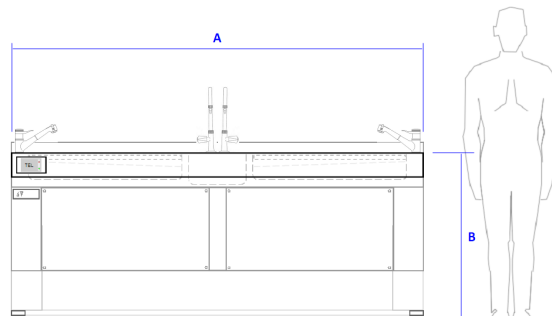
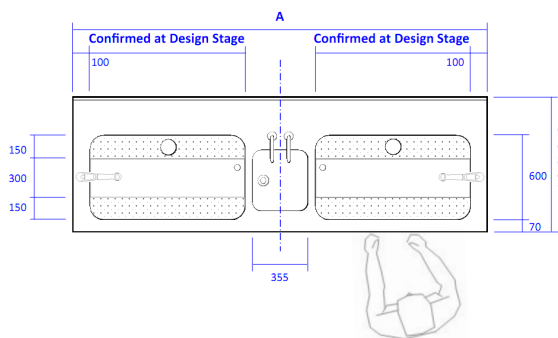


Full length knee space for seated use

STANDARD MODEL DESIGNATIONS AND DIMENSIONS

STAINING BENCH

DFS25-V illustrated below with 2x vented cup-sink drain points, 2x flexible trigger showers and airflow alarm.



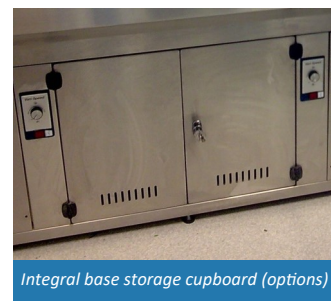
2000mm and longer benches can be provided with LH, RH or central sink bowl or no sink.



DFS25-F without sink



Formalin Dispensing System (options)



Integral base storage cupboard (options)



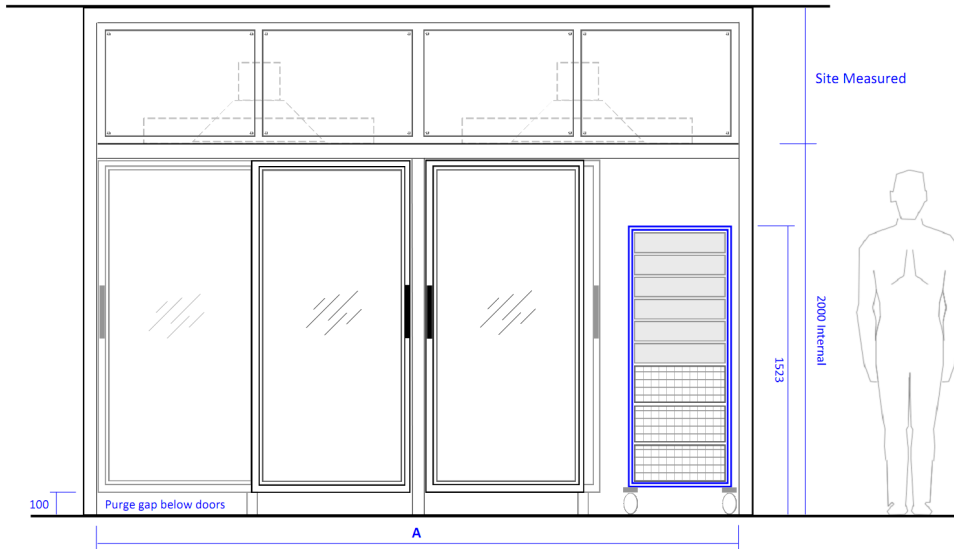
Interchangeable perforated sump covers

Model	Model Description	A mm	B mm
DFS15-F	Seamless, one-piece 316 st.st work surface with integral rear upstand and sink bowl. Flush fitting perforated sump covers. Fixed height support assembly 304 st.st. All satin polished finish. Removable front access panel for services and duct connections.	1500	900
DFS15-V	All as described above, except with in-built concealed electrical height adjustment.		760 to 1100
DFS18-F	Seamless, one-piece 316 st.st work surface with integral rear upstand and sink bowl. Flush fitting perforated sump covers. Fixed height support assembly 304 st.st. All satin polished finish. Removable front access panel for services and duct connections.	1800	900
DFS18-V	All as described above, except with in-built concealed electrical height adjustment.		760 to 1100
DFS20-F	Seamless, one-piece 316 st.st work surface with integral rear upstand and sink bowl. Flush fitting perforated sump covers. Fixed height support assembly 304 st.st. All satin polished finish. Removable front access panel for services and duct connections.	2000	900
DFS20-V	All as described above, except with in-built concealed electrical height adjustment.		760 to 1100
DFS25-F	Seamless, one-piece 316 st.st work surface with integral rear upstand and sink bowl. Flush fitting perforated sump covers. Fixed height support assembly 304 st.st. All satin polished finish. 2No. Removable front access panels for services and duct connections.	2500	900
DFS25-V	All as described above, except with in-built concealed electrical height adjustment.		760 to 1100
DFS30-F	Seamless, one-piece 316 st.st work surface with integral rear upstand and sink bowl. Flush fitting perforated sump covers. Fixed height support assembly 304 st.st. All satin polished finish. 2No. Removable front access panels for services and duct connections.	3000	900
DFS30-V	All as described above, except with in-built concealed electrical height adjustment.		760 to 1100

STANDARD MODEL DESIGNATIONS AND DIMENSIONS

VENTILATED WET SPECIMEN STORAGE

VWSS37-D illustrated below requiring 2x 160dia duct connections.



2x VWSS37-D installed side by side



VWSS8-R and DFT20-S-F with sluice

Model	Model Description	A mm
VWSS8-D	Single bay, free-standing, all from satin polished 316 st.st. Single, framed 6mm toughened safety glass door, hinged. High level front access panel for light and duct connection. Standard internal depth of 600mm. Double depth option available for high density storage.	800
VWSS8-R	All as described above, except top box section replaced with recirculating air Fan Filter Unit.	
VWSS15-D	Two bay, free-standing, all from satin polished 316 st.st. Two, framed 6mm toughened safety glass doors, top-hung sliding. High level front access panel for light and duct connection. Standard internal depth of 600mm. Double depth option available for high density storage.	1500
VWSS15-R	All as described above, except top box section replaced with recirculating air Fan Filter Unit.	
VWSS23-D	Three bay, free-standing, all from satin polished 316 st.st. Three, framed 6mm toughened safety glass doors, top-hung sliding. High level front access panel for light and duct connection. Standard internal depth of 600mm. Double depth option available for high density storage.	2300
VWSS23-R	All as described above, except top box section replaced with recirculating air Fan Filter Unit.	
VWSS30-D	Four bay, free-standing, all from satin polished 316 st.st. Three, framed 6mm toughened safety glass doors, top-hung sliding. High level front access panel for light and duct connection. Standard internal depth of 600mm. Double depth option available for high density storage.	3000
VWSS30-R	All as described above, except top box section replaced with recirculating air Fan Filter Units.	
VWSS37-D	Five bay, free-standing, all from satin polished 316 st.st. Four, framed 6mm toughened safety glass doors, top-hung sliding. High level front access panel for light and duct connection. Standard internal depth of 600mm. Double depth option available for high density storage.	3700
VWSS37-R	All as described above, except top box section replaced with recirculating air Fan Filter Units.	



Internal lighting including LED options

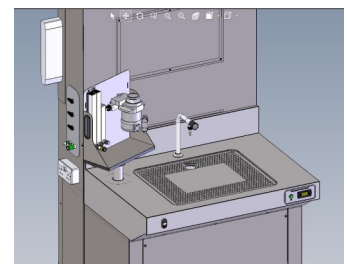


Various single and twin mobile trolleys

WHY CHOOSE EIRDATA?

Established in 2001, Eirdata are specialists in cleanroom validation, commissioning & compliance. We provide these range of services to the pharmaceutical, medical devices and healthcare sectors primarily. In 2013, Eirdata was acquired by ESS Ltd. Engineering, Support & Services (ESS) Ltd:

- HEPA filter integrity testing
- Non-viable particulate monitoring
- Airflow visualisation
- Air flow validation/Air change rate verification
- Temperature, humidity and room pressure control
- LAF and BSC validation
- Laboratory fume cupboard testing, maintenance and validation
- Room recovery testing
- Validation of containment enclosures and suites
- Audit preparation and support
- Operating Theatre & Recovery Rooms (Conventional and UltraClean) Validation / Verification
- CSSD Validation / Verification
- Isolation Room Validation / Verification
- Laboratory Containment Rooms (CATIII) Validation / Verification
- Radon Assessments & Monitoring
- Aspergillus Sampling
- LEV Assessments & Monitoring
- Chemical Exposure Monitoring
- Air & Dust Monitoring
- Steam system surveys and upgrades
- Compressed Air leak surveys
- Warehouse temperature control monitoring
- Management and Implementation of HVAC & Energy projects
- GMP Compliance work including SOPs, COS, Drawings, DCAs, MTRs
- Project management of HVAC modifications and improvements
- HVAC Improvements including energy, best practice, systems review and streamlining operations
- Carry out material cost and quality vendor comparisons
- Implementation of asset replacement strategies
- Condition based Maintenance including Vibration, Ultrasonic and Thermography
- Assist occupational health and HSE department with surveys
- 3D Architectural & MEP Drawings & Surveys
- Mechanical and Electrical O&M Manuals
- Online Document Management Platforms



In-house 3D modelling and CAD design



Integrated fume scrubbers



Custom Enclosures including ATEX rated



All classes of Biohazard Safety Cabinets



Fume Cupboards to BS EN14175