

i Specification and options

Main chamber	<ul style="list-style-type: none">White polyester coated stainless steel - (optional 316L stainless steel polished)Unidirectional airflow (vertically downwards) - 0.4 m/s +/- 20%Downflow air change rate indicative 2000 air changes per hourPolished 316L stainless steel removable dished worktrayOptional rails and racking system
Transfer devices	<ul style="list-style-type: none">Modular approachIndependently ventilatedD type double HEPA filtered transfer chambers with adjustable interlocks footswitches for inner doors, and sliding traysHigh air change rate indicative 2000 air changes per hourSealing lids for actuated automatic pressure decay leak testWhite polyester coated stainless steel internally and externally
Access	<ul style="list-style-type: none">Inflatable seals on all apertures ensure microbiological integrity and failsafe workingLarge opening acrylic visor, supported by gas springs in the open position, complete with bonded 300 mm diameter sleeve ports - (optional elliptical ports or other port diameters upon request)Fabric lined polypropylene sleeves, safe change cuff-rings and all associated O-rings for the Envair 'safer aseptic glove change' when used with sterile-wrapped, beaded, powder-free gloves
Controls and electrics	<ul style="list-style-type: none">PLC control system with full colour 150mm² Siemens TP700 comfort touchscreen displayAll critical operating parameters are constantly displayed on the isolator display for immediate operator viewingInternal pressure, downflow velocity and air change rate are shown numerically with colour coded fault conditionsAutomatic pressure decay test

For the complete specification and options table please visit www.envair.co.uk



For further information, or to speak to one of our dedicated sales team, contact us:

IN IRELAND CONTACT
Eirdata Ltd.
Ireland: 4 Shelbourne Road,
Limerick, Ireland.



Phone: +353 (0)61 326921
Fax: +353 (0)61 326112
Email: info@eirdata.ie

www.envair.co.uk

ENVAIR
Integrity in clean air

Healthcare | Biotech | Pharmaceuticals Industry



Revolutionary
approach to
healthcare

- Safe
- Rapid decontamination
- Validated
- Automatic operation
- Facilitates productivity

4 GLOVE RAPID GASSING ISOLATOR

Bespoke medication preparation
and handling system

www.envair.co.uk

Call our dedicated sales team tel +353 (0)61 326921

AUTOMATED & RAPID STERILISATION

Helping Hospitals and Drug Producers Deliver New and Novel Drug Treatments

Medical advances are culminating in a revolutionary approach to healthcare. The safe and effective preparation of medicines is critical to the delivery of treatment. Such advances set new challenges for hospitals, research laboratories, biotechnology and pharmaceutical companies.

Isolation technology and the ability to provide a closed localised 'clean environment' enables the manipulation of a variety of components / agents, while ensuring the operator and product are protected. With ever greater challenges, newer agents and increasing standards, there is a demand for an isolator that delivers on safe and clean preparation through robust build quality and exceptional reliability.

Envair's new Rapid Gassing Isolator is designed to meet the challenge of sterilisation of components within a transfer hatch designed and configured to deliver a validated automated rapid gas cycle. Integrated gassing technology delivers a greater level of quality (microbiological) assurance during the transfer process. It also facilitates the disinfection of the entire isolator when required.

Using a flexible modular approach, units can be easily customised to suit the end-user application. High availability and productivity are assured as the microbiological decontamination process can take less than 30 minutes.



Revolutionary approach

- Configurable to operate in either positive or negative pressure mode
- Rapid microbiological decontamination cycle of less than 30 minutes*
- Integrated VHP generator

* Load dependent

Designed for efficient working

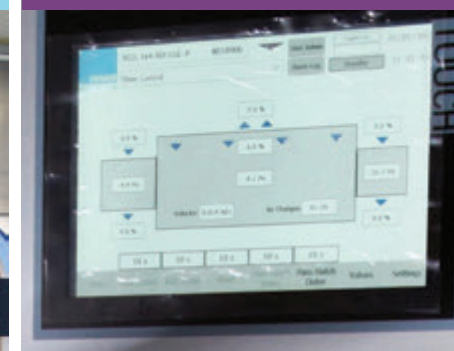
- Safe
- Rapid decontamination
- Validated
- Automated operation
- Facilitates productivity

CUTTING EDGE TECHNOLOGY

Validated



Siemens screen



Inflated door seal



CCTV (optional)



Sockets (optional)



Safe Hands with Envair

Since 1972 Envair have been pioneering the engineering of GMP compliant ultra-clean and containment equipment for the medical, healthcare, biotech and pharmaceutical industries.

The new modular 4 Glove Rapid Gassing Isolator allows for rapid 'transfer chamber' sterilisation cycles, promoting efficiency and safety. A 2 Glove variant is also available.

To ensure lifetime, trouble-free use we provide a comprehensive maintenance, testing and parts service.

Envair can provide a full technical and custom build service.

Standards compliance

BS EN ISO 14644

EU GMP

BS EN 1822 (HEPA filters)

IEC 61010-1:2010 (Electric wiring)

'Pharmaceutical Isolators' Pharmaceutical Press 2004

AS 4273:1999 (when optional activated carbon filter is fitted)